



Bastrop County 4-H

CONTACT US:

901 Pecan Street | PO Box 650 | Bastrop, TX 78602
Phone: 512-581-7186 | Fax: 512-581-7187

COUNTY EXTENSION AGENTS:

4-H Agent: Mellanie Mickelson: MLMickelson@ag.tamu.edu
AgNR Agent: Ashley Radde: Ashley.Radde@ag.tamu.edu
FCH Agent: Hillary Long: Hillary.Long@ag.tamu.edu

STAY CONNECTED:

Website - <https://bastrop.agrilife.org>

Blog - www.bastrop4h.blogspot.com

Facebook - www.facebook.com/BastropCounty4H

Livestock Project Guidelines & Reminders

YOUTH LIVESTOCK VALIDATION PROGRAM:

The mission of the youth livestock validation program is to promote a positive youth development environment focused on ensuring rules for livestock exhibition are being followed under the supervision of County Extension Agents and Agricultural Science Teachers. This helps to foster integrity, virtues, and values of youth and families.

The purpose of validation is to encourage positive relationships with County Extension Agents, Agricultural Science Teachers and local stakeholders, create a level playing field for youth livestock projects, maximize youth experience and life skill development, and facilitate youth engagement with livestock projects.

Validation allows youth to build on life skills such as responsibility, respect, teamwork and communication. By participating in the livestock project, youth exhibitors learn daily care, nutrition, reproduction, and production practices specific to livestock projects.

ALL LIVESTOCK EXHIBITORS MUST:

- Purchase their animal(s); a list of breeder suggestions for families is available online at <https://texasyouthlivestock.com/livestock-connection/>
- Order Validation Tags (or birds for poultry projects)
- Complete the physical validation process & paperwork for their breeding/market animal(s)
- Create a profile and **complete & pass** the Quality Counts Certification Program as a Junior, Intermediate, and Senior 4-H member through the online learning system at <https://www.texaslivestockvalidation.com/qc/qcregister.aspx> (*must be completed before show entries will be accepted*)
- Complete & turn in one entry form per child per show in which youth want to exhibit their livestock project(s)
- Read & abide by the rules listed in the rule or premium book for each livestock show

ADDITIONAL VALIDATIONS ARE REQUIRED FOR LOCAL BASTROP COUNTY SHOWS:

Local livestock show set their own validation requirements separate from State Validation. Double check the 4-H Newsletter and the Show Rules to verify the dates and requirements for each show.

- Bastrop Area Livestock Show: find them on Facebook!
- Elgin Livestock Show: <https://www.elginlivestockshowassociation.com/>
- Smithville Livestock Show: <https://www.jamboreesmithville.com/livestock-show-sale>

Texas A&M AgriLife Extension is an equal opportunity employer and program provider.
The Texas A&M University System, U.S. Department of Agriculture, and the
County Commissioners Courts of Texas Cooperating.

TEXAS A&M
AGRI LIFE
EXTENSION

Major Livestock Show Sites & Entry Notes:

State Fair of Texas:

- Website: <https://bigtex.com/>
- Location: Dallas, Texas
- Completed Entries due to CEO in mid-August
- Takes Place in October

Heart O' Texas (HOT):

- Website: <https://www.hotfair.com/>
- Location: Waco, Texas
- Completed Entries due to CEO in mid-August
- Takes place in October

Fort Worth Stock Show & Rodeo (FWSSR):

- Website: <https://www.fwssr.com/>
- Location: Fort Worth, Texas
- Completed Entries Due to CEO first week of Nov.
- Takes Place in January

San Angelo Stock Show & Rodeo (SASSR):

- Website: <https://www.sanangelorodeo.com/>
- Location: San Angelo, Texas
- Completed Entries Due to CEO first week of Nov.
- Takes place in January/February

San Antonio Livestock Exposition (SALE):

- Website: <http://www.sarodeo.com/>
- Location: San Antonio, Texas
- Completed Entries Due to CEO first week of Nov.
- Takes place in February

Houston Livestock Show & Rodeo (HLSR):

- Website: <https://www.rodeohouston.com/>
- Location: Houston, Texas
- Completed Entries Due to CEO first week of Nov.
- Takes place in March

Rodeo Austin (RA):

- Website: <https://rodeoaustin.com/>
- Location: Austin, Texas
- Completed Entries Due to CEO first week of Nov.
- Takes place in March

State Livestock Validation Timelines:

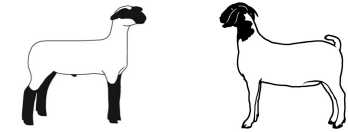


Beef Project - Market Steers

- Order State Validation Tags from CEO in April
- Physically Validated in June
- Purchase calves around March - April
- Complete Show Entries

Beef Project - Breeding Heifers

- Order State Validation Tags from CEO in April and August
- April tag orders are physically validated in June
- August tag orders are physically validated in October
- Can purchase heifers throughout the year
- Complete Show Entries

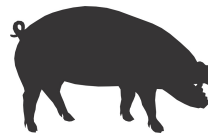


State Fair Lamb & Goat Projects:

- Order State Fair Validation tags from CEO in April for breeding & market projects
- Physically Validated in June
- TLBA/TGBA tags must already be in ear
- Purchase market animals around May
- Complete Show Entries in August

Spring Major Lamb & Goat Projects:

- Order State Major Show Validation Tags from CEO in August for breeding & market projects
- Physically Validated in October
- TLBA/TGBA tags must already be in ear
- purchase market animals around June - August
- Complete Show entries in November



State Fair Swine Projects:

- Order State Fair Validation tags from CEO in April for breeding & market projects
- Physically Validated in June
- Purchase market animals around May
- Complete Show Entries in August

Spring Major Swine Projects:

- Order State Major Show Validation Tags from CEO in September for breeding & market projects
- Physically Validated in November
- purchase market animals around September
- Complete Show entries in November



Market Turkey Projects:

- Order poults in June
- Pick up poults in November
- Complete Show Entries in November

Market Broiler(Chicken) Projects:

- Order State Fair Chicks in June for pick up in August
- Complete State Fair Entries in August
- Order SASSR/SALE, HLSR, or RA chicks in August for pick up in January/February
- Complete SASSR/SALE, HLSR, or RA Show Entries in November

Please Note: Ordering Tags & Validating Animals does NOT enter your animal in a show. You must also complete one entry form per show per child in order to show an animal.